

SUBSURFACE UTILITY ENGINEERING
QUALITY LEVEL - A: Test Hole Data Information
 SAM, Inc. Project Number: 31151-31

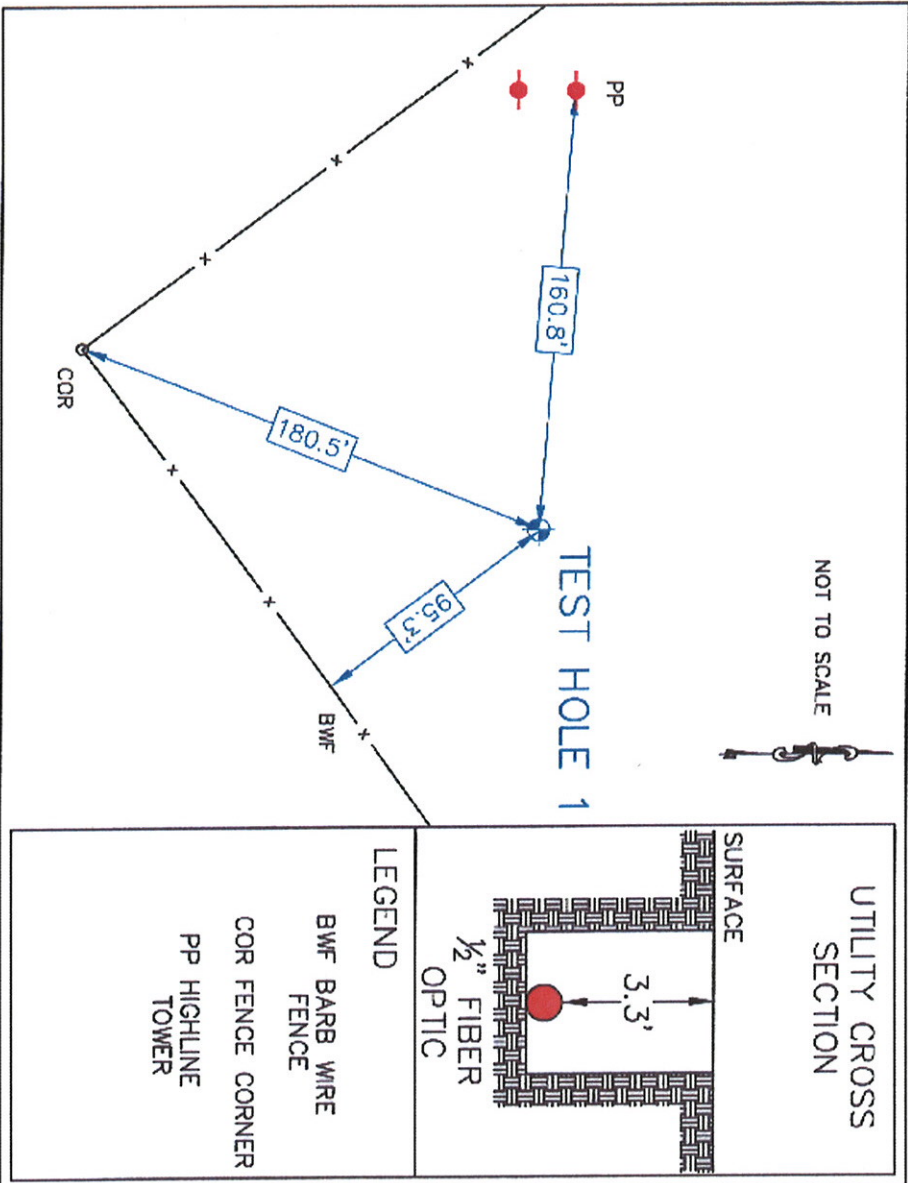
TEST HOLE NUMBER: 1
 Date: July 8, 2011
 Client: C P & Y, Inc.
 Project: Leon Creek Interceptor



Project Location: **San Antonio, Texas**
 Utility Location: **Leon Creek Wastewater Plant**
 Utility Sta./Offset: **N/A**
 Record Utility: **Fiber Optic line**
 Utility Owner:
 Contact/Phone:
 Address:
 Field Crew: **Gabe Johnson and Miller Pipeline**
 Field Conditions: **Off roadway**

Surface Material: **Natural ground**
 Surface Elevation: **520.50**
 Thickness & Condition: **Dry**
 Trench Material: **Black clay**
 Utility Bedding Material: **Black clay**
 Utility Found: **1/2" direct bury Fiber Optic line**
 Utility Condition: **Good**
 Utility Depth (Top): **3.3'**

- COMMENTS**
1. SAM, Inc. located Test Hole # 1 by records and utility locator for the fiber optic line prior to air/vacuum excavation of the utility.
 2. No additional utilities were found within Test Hole # 1 excavation.
 3. All excavation was performed with air/vacuum excavation equipment.
 4. The Test Hole was backfilled with excavated material.
 5. The picture depicts the existing fiber optic line.



PROJECT CONTROL

Pt # 5
 IRRC
 N = 13653027.7963
 E = 2120693.4107
 Elev = 540.69

Pt # 7
 IRRC
 N = 13650292.3812
 E = 2123526.9099
 Elev = 528.93

UTILITY COORDINATES
 N = 13648232.99
 E = 2126950.82
 Elev = 517.2



TEST HOLE PICTURE



TEXAS BOARD OF PROFESSIONAL ENGINEERS COMPANY
 REGISTRATION # F-1937

SUBSURFACE UTILITY ENGINEERING
QUALITY LEVEL – A: Test Hole Data Information
 SAM, Inc. Project Number: 31151-31

TEST HOLE NUMBER: 2
 Date: July 7, 2011
 Client: C P & Y, Inc.
 Project: Leon Creek Interceptor

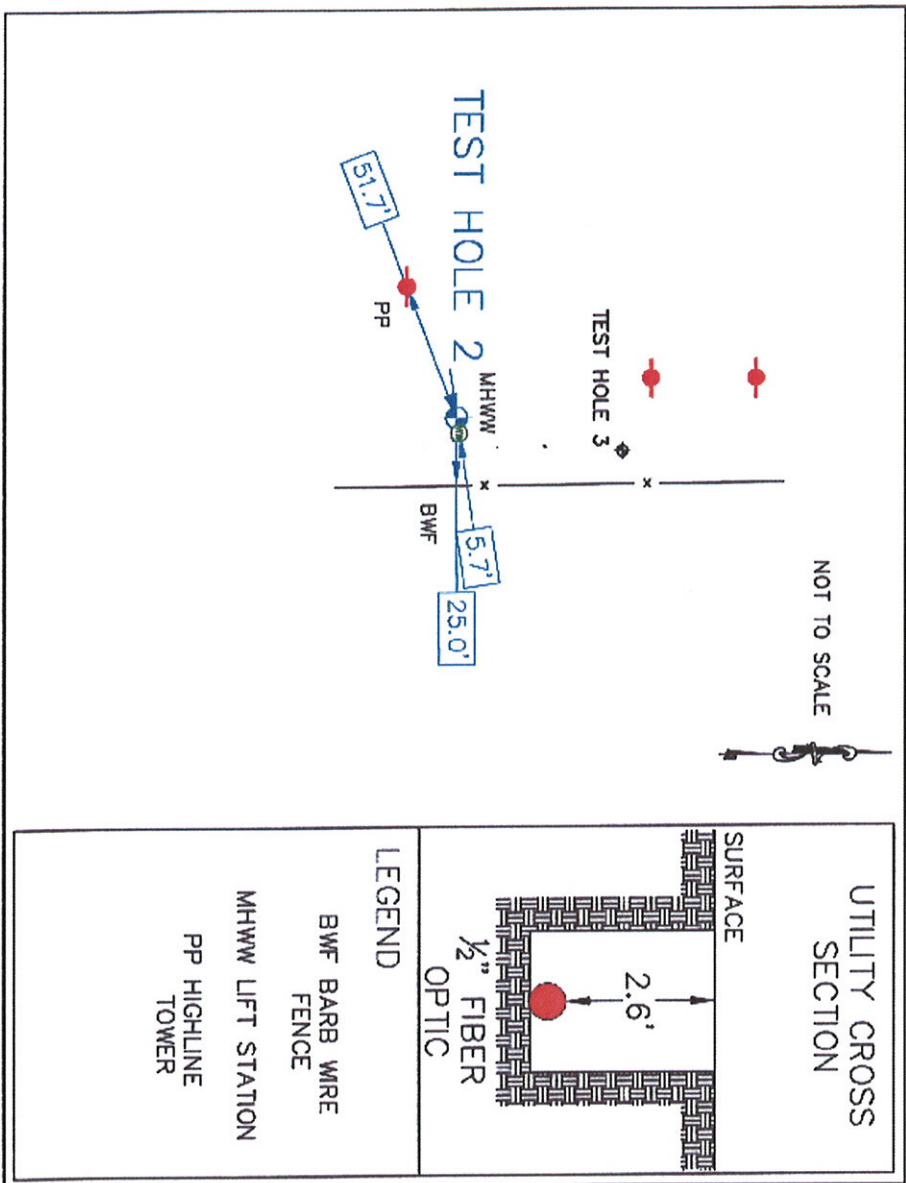


Project Location:	San Antonio, Texas	Surface Material:	Natural ground
Utility Location:	Leon Creek Wastewater Plant	Surface Elevation:	527.68
Utility Sta./Offset:	N/A	Thickness & Condition:	Dry
Record Utility:	Fiber Optic line	Trench Material:	Rocky black clay
Utility Owner:		Utility Bedding Material:	Rocky black clay
Contact/Phone:		Utility Found:	1/2" direct bury fiber optic line
Address:		Utility Condition:	Good
Field Crew:	Gabe Johnson and Miller Pipeline	Utility Depth (Top):	2.6'
Field Conditions:	Off roadway		

COMMENTS

1. SAM, Inc. located Test Hole # 2 by records and utility locator for the fiber optic line prior to air/vacuum excavation of the utility.
2. No additional utilities were found within Test Hole # 2 excavation.
3. All excavation was performed with air/vacuum excavation equipment.
4. The Test Hole was backfilled with excavated material.
5. The picture depicts the existing fiber optic line.

TEST HOLE PICTURE



PROJECT CONTROL
 Pt # 5
 IRRC
 N= 13653027.7963
 E= 2120693.4107
 Elev = 540.69

Pt # 7
 IRRC
 N= 13650292.3812
 E= 2123526.9099
 Elev = 528.93

UTILITY COORDINATES
 N = 13649850.42
 E = 2124626.72
 Elev = 525.1

STATE OF TEXAS
 LYNN D. LAMBDEN
 74139
 LICENSED PROFESSIONAL ENGINEER
 REGISTRATION # F-1937

1-26-2011

TEXAS BOARD OF PROFESSIONAL ENGINEERS COMPANY
 REGISTRATION # F-1937

SUBSURFACE UTILITY ENGINEERING
QUALITY LEVEL - A: Test Hole Data Information
 SAM, Inc. Project Number: 31151-31

TEST HOLE NUMBER: 3
 Date: July 7, 2011
 Client: C P & Y, Inc.
 Project: Leon Creek Interceptor



Project Location: **San Antonio, Texas**
 Utility Location: **Leon Creek Wastewater Plant**
 Utility Sta./Offset: **N/A**
 Record Utility: **16" Water line**
 Utility Owner: **SAWS**
 Contact/Phone: **Jose Carreno 210-233-3466**
 Address: **2800 US Hwy 281 N., San Antonio, TX 78212**
 Field Crew: **Gabe Johnson and Miller Pipeline**
 Field Conditions: **Off roadway**

Surface Material: **Natural ground**
 Surface Elevation: **527.89**
 Thickness & Condition: **Dry**
 Trench Material: **Rocky black clay**
 Utility Bedding Material: **Rocky black clay**
 Utility Found: **16" poly pipe with tracer wire**
 Utility Condition: **Good**
 Utility Depth (Top): **3.5'**

PROJECT CONTROL

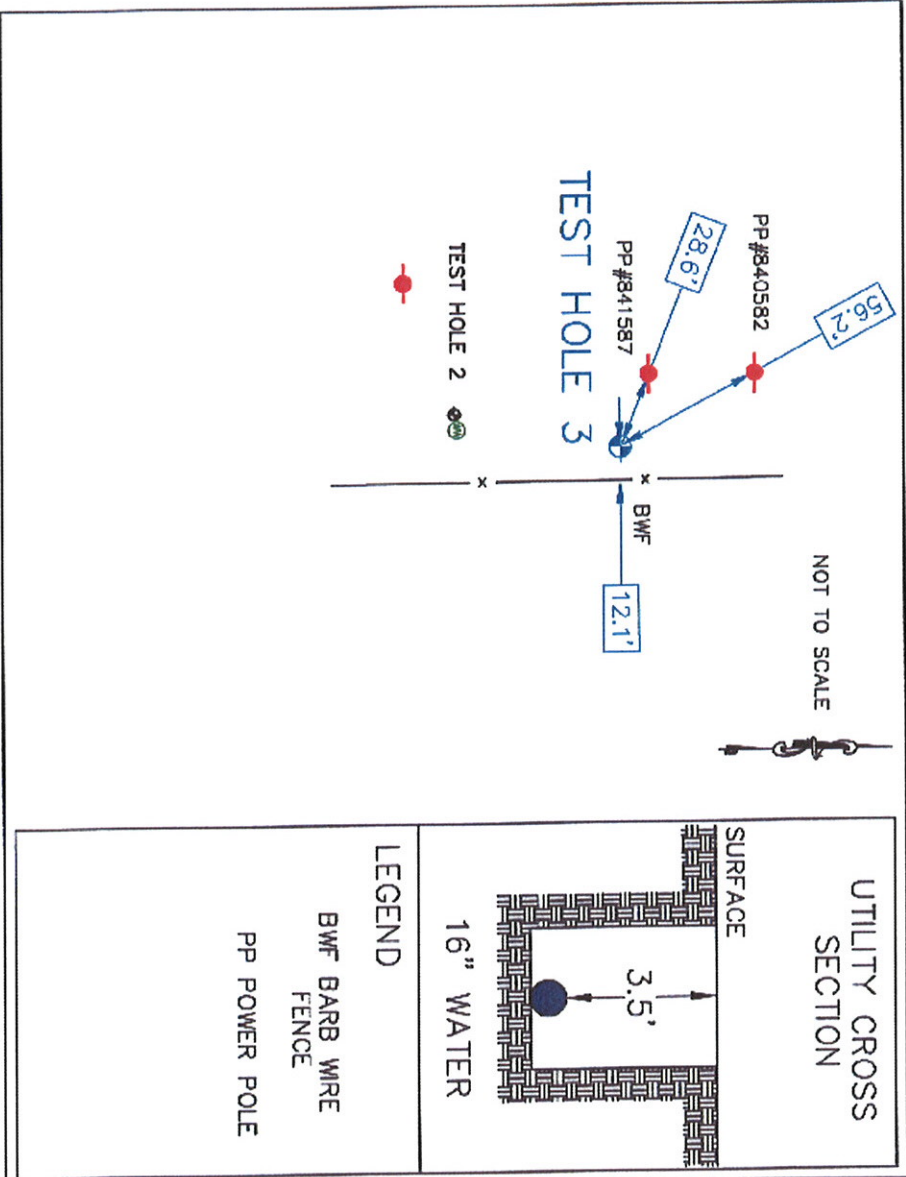
Pt # 5
 IRRC
 N = 13653027.7963
 E = 2120693.4107
 Elev = 540.69
 P# 7
 IRRC
 N = 13650292.3812
 E = 2123526.9099
 Elev = 528.93

UTILITY COORDINATES

N = 13649911.47
 E = 2124639.21
 Elev = 524.4

LEGEND

BWF BARB WIRE FENCE
 PP POWER POLE



COMMENTS

1. SAM, Inc. located Test Hole # 3 by records and utility locator for the water line prior to air/vacuum excavation of the utility.
2. No additional utilities were found within Test Hole # 3 excavation.
3. All excavation was performed with air/vacuum excavation equipment.
4. The Test Hole was backfilled with excavated material.
5. The picture depicts the existing water line.

TEST HOLE PICTURE



TEXAS BOARD OF PROFESSIONAL ENGINEERS COMPANY
 REGISTRATION # F-1937

SUBSURFACE UTILITY ENGINEERING
QUALITY LEVEL - A: Test Hole Data Information
 SAM, Inc. Project Number: 31151-31

TEST HOLE NUMBER: 4

Date: July 7, 2011
 Client: C P & Y, Inc.
 Project: Leon Creek Interceptor



Project Location: **San Antonio, Texas**
 Utility Location: **Leon Creek Wastewater Plant**
 Utility Sta./Offset: **N/A**
 Record Utility: **16" Water line**
 Utility Owner: **SAWS**
 Contact/Phone: **Jose Carrero 210-233-3466**
 Address: **2800 US Hwy 281 N., San Antonio, TX 78212**
 Field Crew: **Gabe Johnson and Miller Pipeline**
 Field Conditions: **Off roadway**

Surface Material: **Natural ground**
 Surface Elevation: **534.01**
 Thickness & Condition: **Dry**

Trench Material: **Rocky black clay**
 Utility Bedding Material: **Rocky black clay**

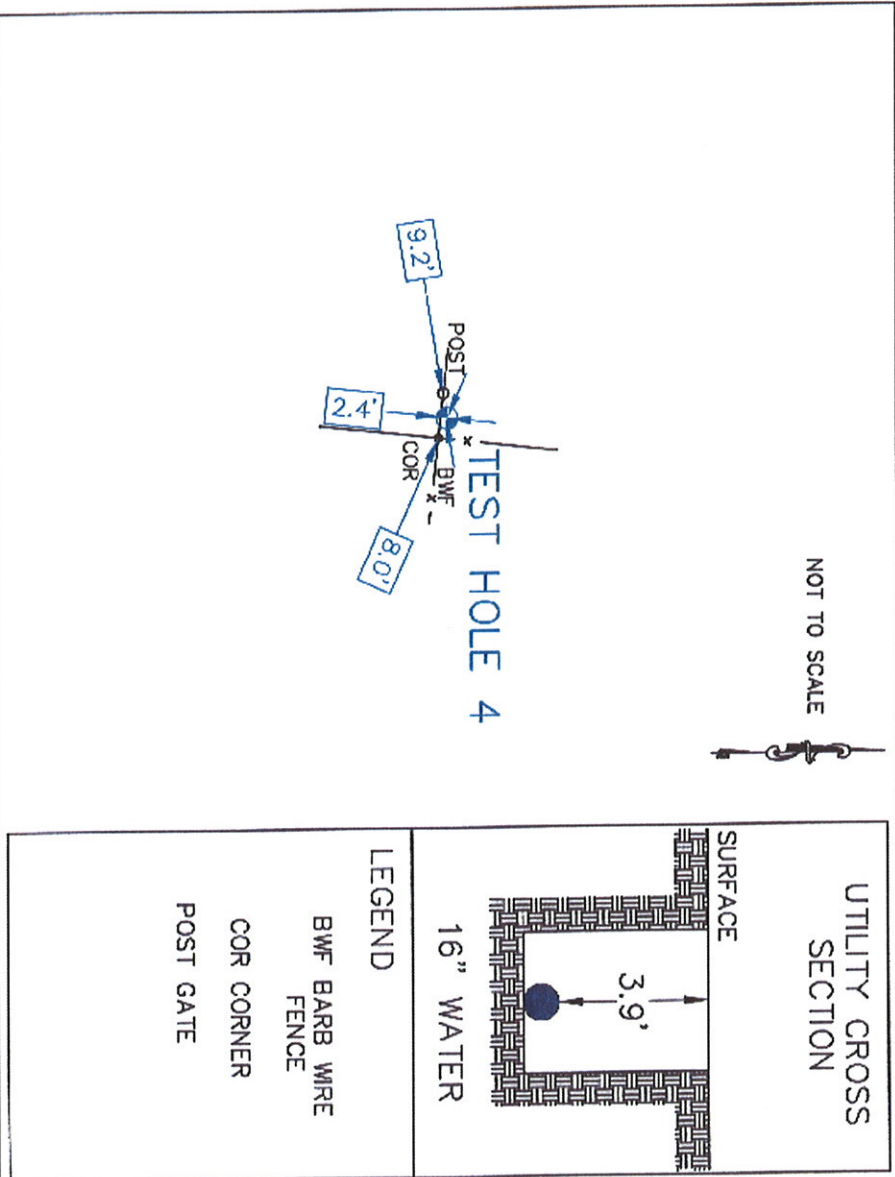
Utility Found: **16" poly pipe without tracer wire**
 Utility Condition: **Good**

Utility Depth (Top): **3.9'**

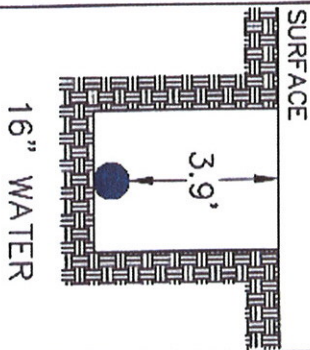
COMMENTS

1. SAM, Inc. located Test Hole # 4 by utility records for the water line prior to air/vacuum excavation of the utility.
2. No additional utilities were found within Test Hole # 4 excavation.
3. All excavation was performed with air/vacuum excavation equipment.
4. The Test Hole was backfilled with excavated material.
5. The picture depicts the existing water line.

TEST HOLE PICTURE



UTILITY CROSS SECTION



LEGEND

- BWF BARB WIRE FENCE
- COR CORNER
- POST GATE

PROJECT CONTROL

Pt # 5
 IRRC
 N = 13653027.7963
 E = 2120693.4107
 Elev = 540.69

Pt # 7
 IRRC
 N = 13650292.3812
 E = 2123526.9099
 Elev = 528.93

UTILITY COORDINATES

N = 13650289.78
 E = 2124643.20
 Elev = 530.1



7-26-2011

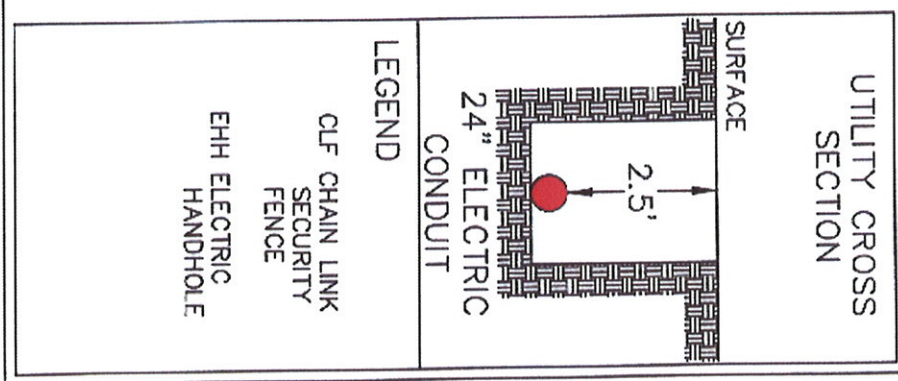
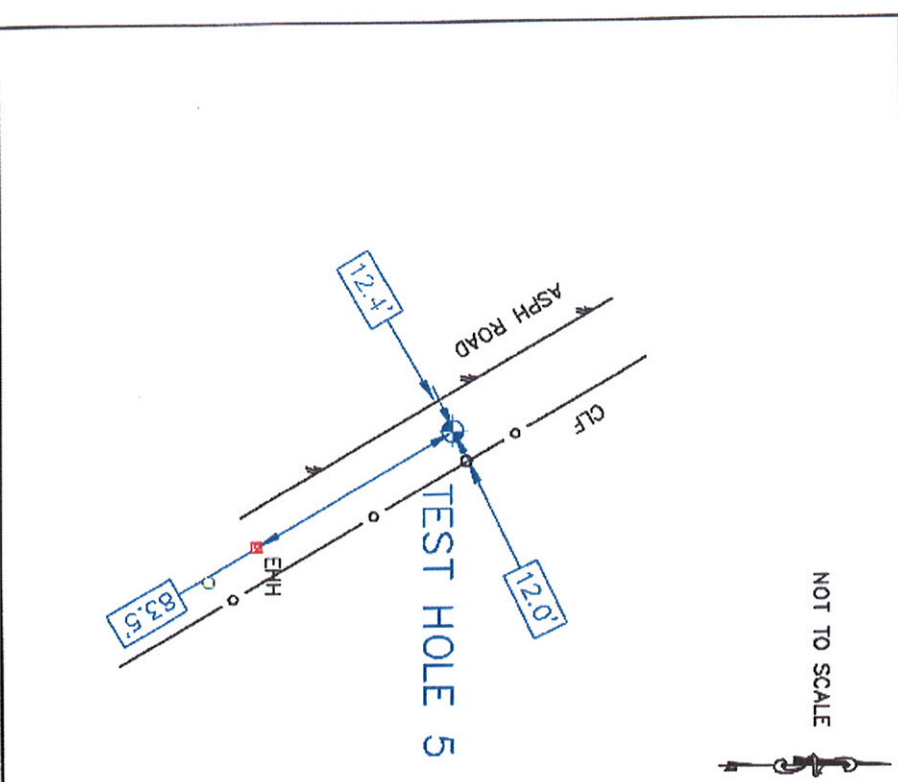
TEXAS BOARD OF PROFESSIONAL ENGINEERS COMPANY
 REGISTRATION # F-1937

SUBSURFACE UTILITY ENGINEERING
QUALITY LEVEL - A: Test Hole Data Information
 SAM, Inc. Project Number: 31151-31

Project Location: **San Antonio, Texas**
 Utility Location: **Leon Creek Wastewater Plant**
 Utility Sta./Offset: **N/A**
 Record Utility: **Electric Conduit**
 Utility Owner: **CPS Energy**
 Contact/Phone: **Ricardo Rodriguez 210-353-2226**
 Address: **145 Navarro St, San Antonio, TX 78296**
 Field Crew: **Gabe Johnson and Miller Pipeline**
 Field Conditions: **Off roadway**

TEST HOLE NUMBER: 5
 Date: July 8, 2011
 Client: C P & Y, Inc.
 Project: Leon Creek Interceptor

Surface Material: **Natural ground**
 Surface Elevation: **527.19**
 Thickness & Condition: **Dry**
 Trench Material: **Black clay**
 Utility Bedding Material: **Black clay**
 Utility Found: **24" concrete conduit**
 Utility Condition: **Good**
 Utility Depth (Top): **2.5'**



PROJECT CONTROL
 Pt # 5
 IRRC
 N = 13653027.7963
 E = 2120693.4107
 Elev = 540.69
 Pt # 7
 IRRC
 N = 13650292.3812
 E = 2123526.9099
 Elev = 528.93

UTILITY COORDINATES
 N = 13652185.58
 E = 2121778.51
 Elev = 524.7



- COMMENTS**
1. SAM, Inc. located Test Hole # 5 by records and utility locator for the electric line prior to air/vacuum excavation of the utility.
 2. No additional utilities were found within Test Hole # 5 excavation.
 3. All excavation was performed with air/vacuum excavation equipment.
 4. The Test Hole was backfilled with excavated material.
 5. The picture depicts the existing conduit.



STATE OF TEXAS
 PROFESSIONAL ENGINEER
 LYNN D. LAMBDEN
 74139
 7-20-2011

TEXAS BOARD OF PROFESSIONAL ENGINEERS COMPANY
 REGISTRATION # F-1937